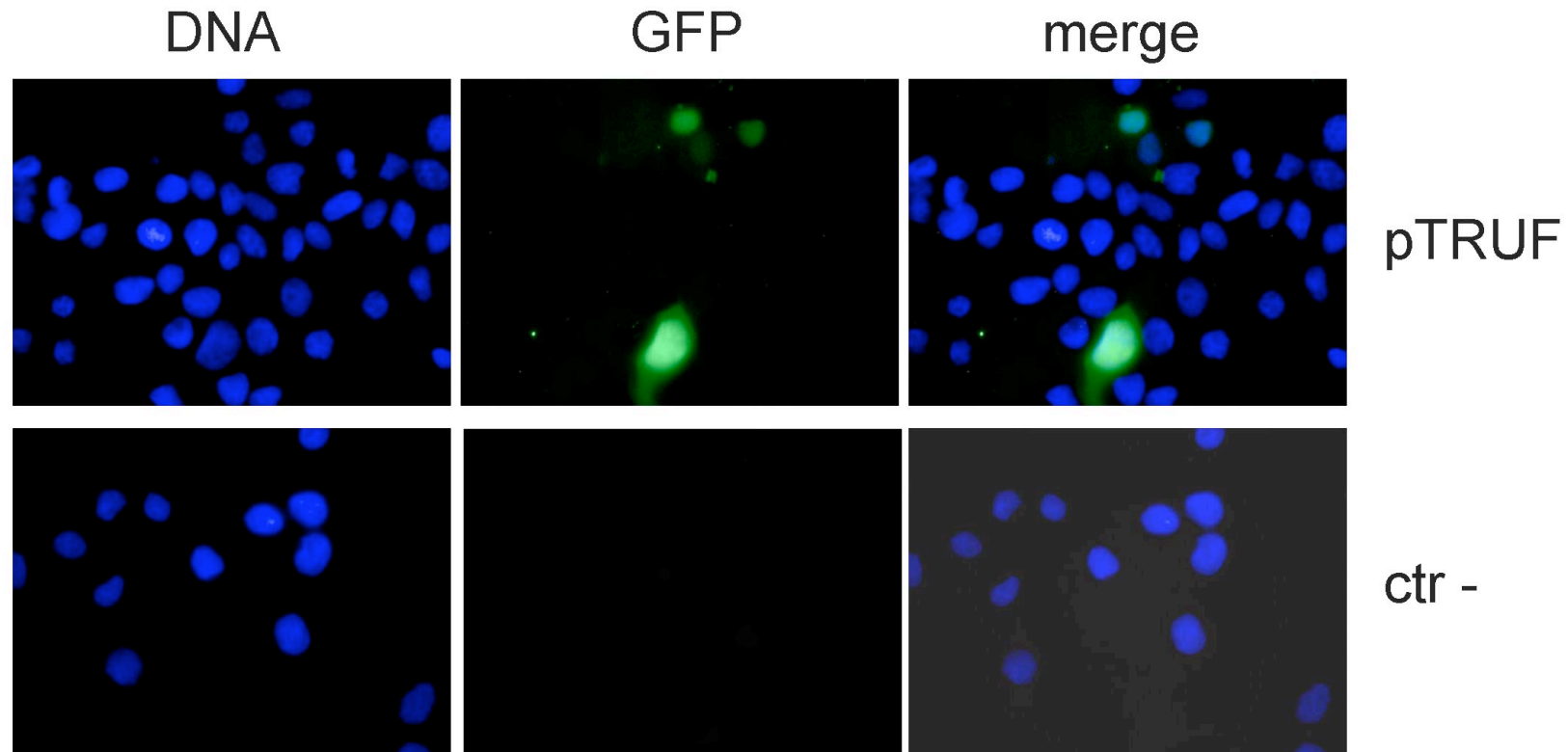


## Gruppo a



Ctr-:

Cells counted: 104

% GFP positive cells: 0

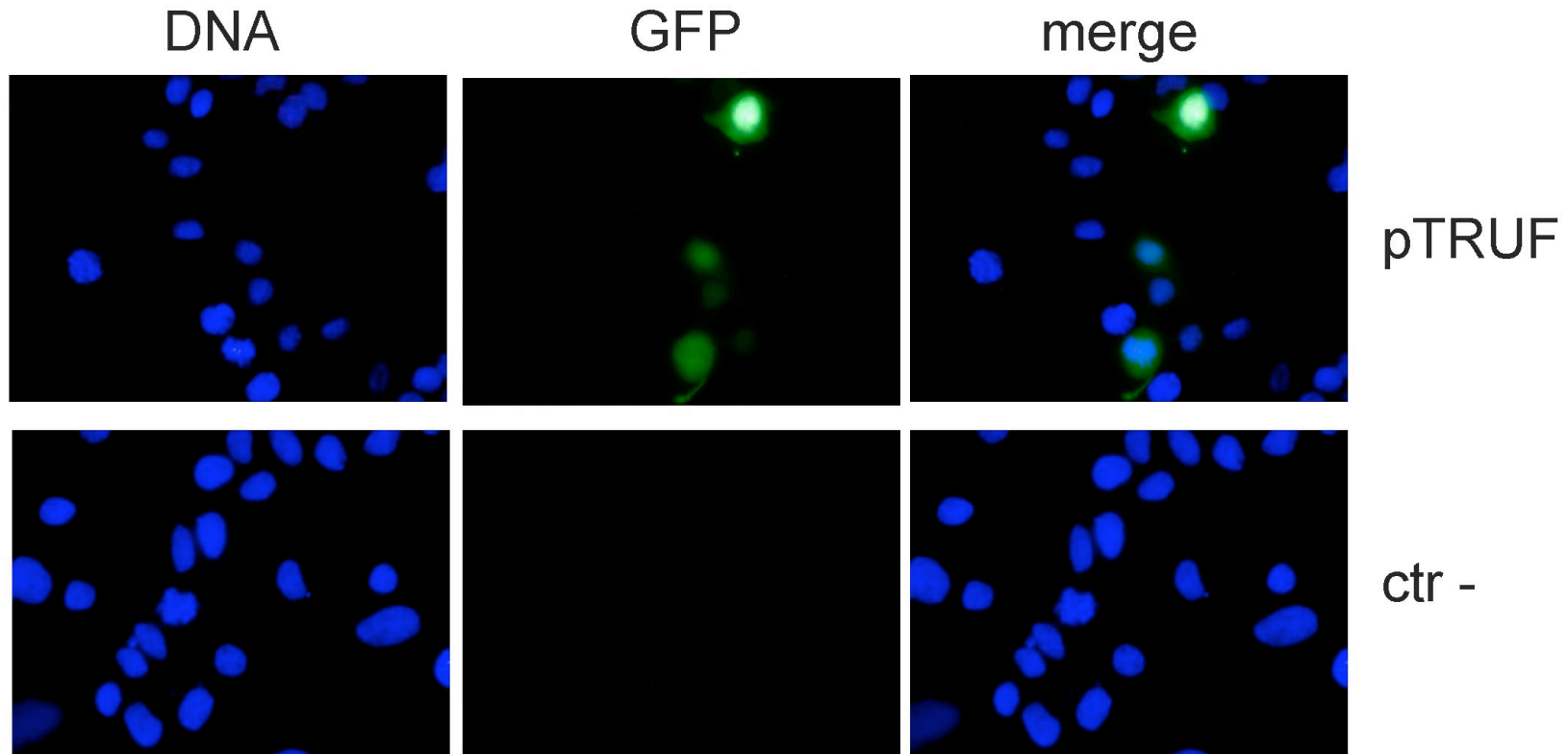
pTRUF:

Cells counted: 127

% GFP positive cells: 15

Transfection efficiency:  $15/127=12\%$

## Gruppo b



Ctr-:

Cells counted: 100

% GFP positive cells: 0

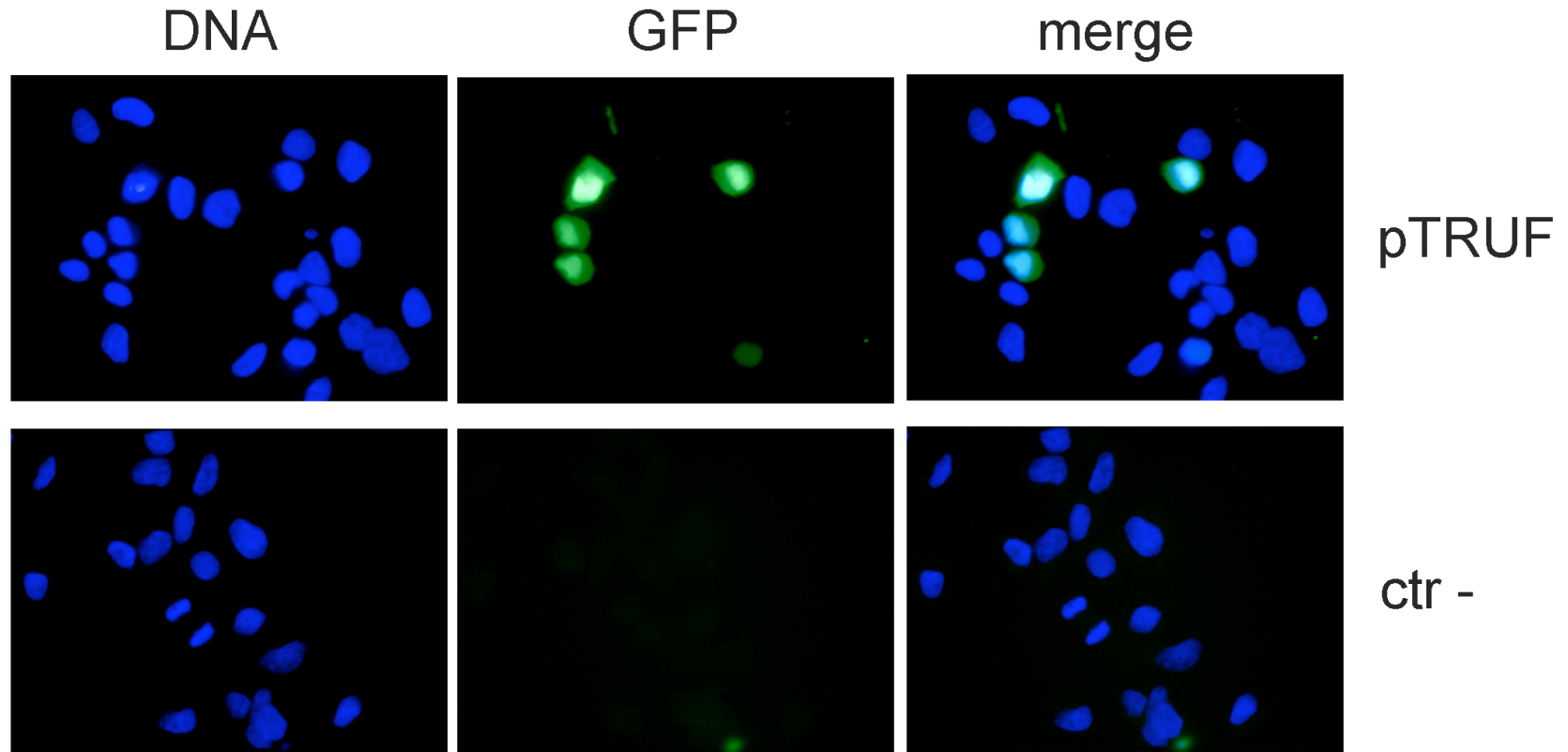
pTRUF:

Cells counted: 110

% GFP positive cells: 15

Transfection efficiency:  $15/110=13,6\%$

## Gruppo c



Ctr-:

Cells counted: 100

% GFP positive cells: 0

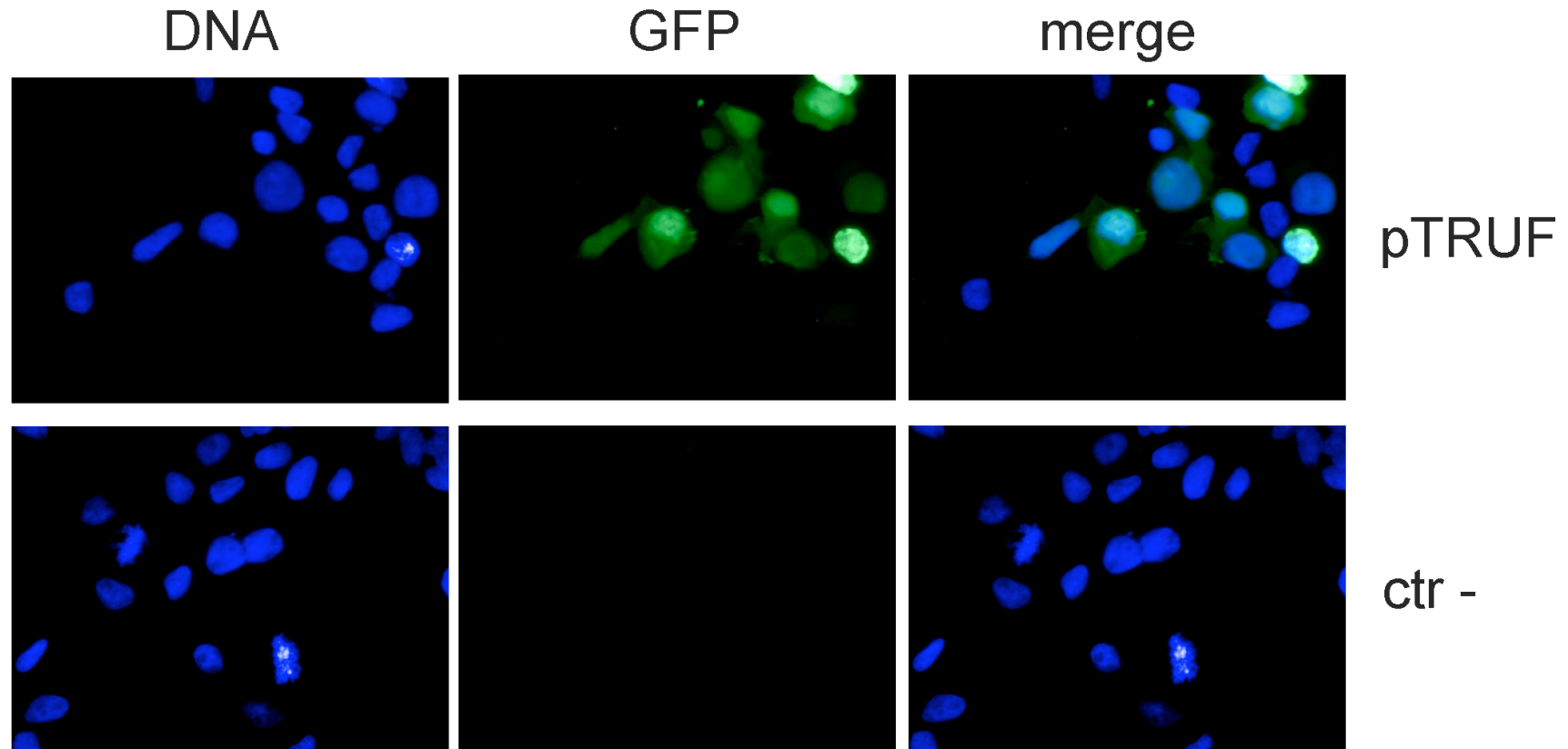
pTRUF:

Cells counted: 194

% GFP positive cells: 44

Transfection efficiency:  $44/194=22,6\%$

## Gruppo d



Ctr-:

Cells counted: 100

% GFP positive cells: 0

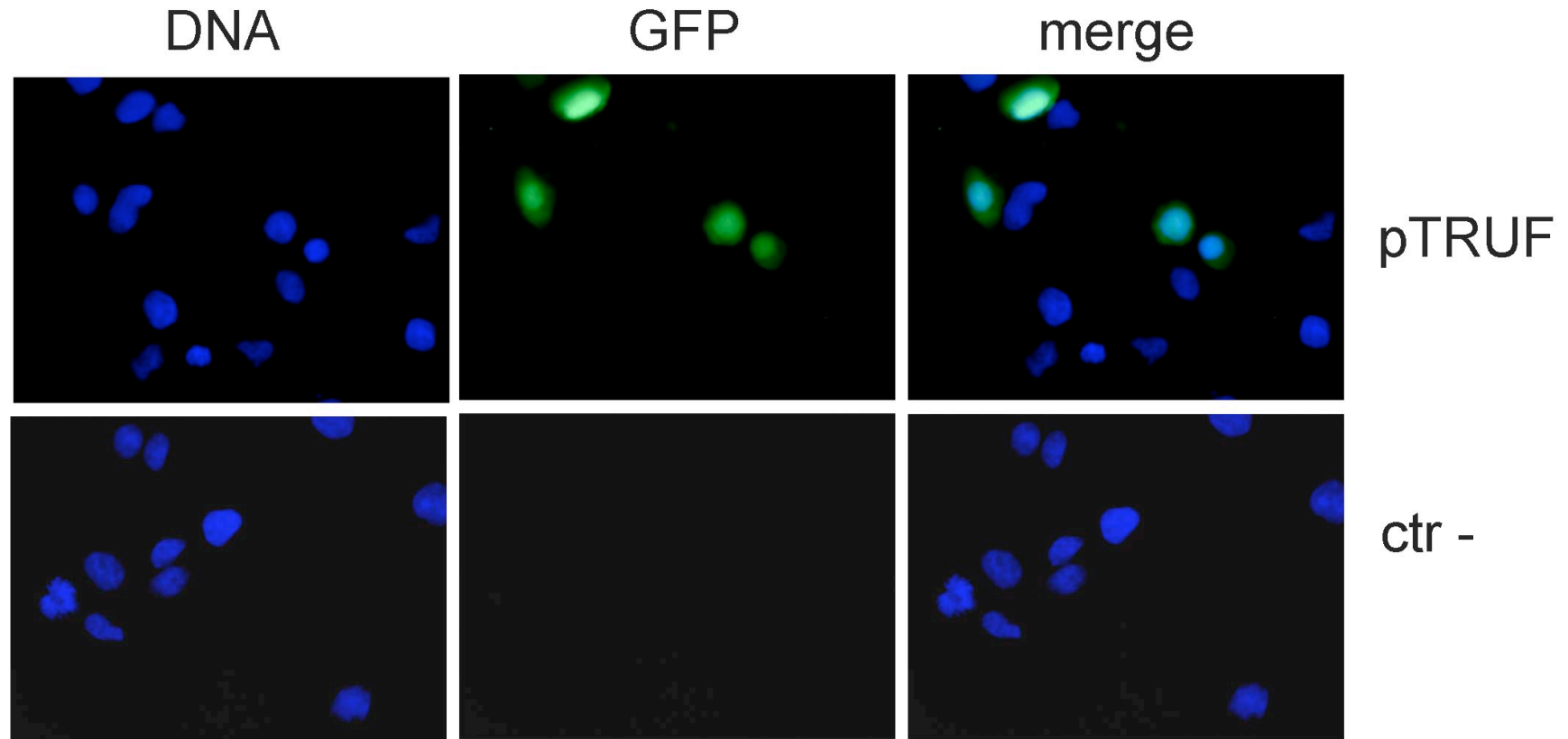
pTRUF:

Cells counted: 103

% GFP positive cells: 47

Transfection efficiency:  $47/103=45,6\%$

## Gruppo e



Ctr-:

Cells counted: 100

% GFP positive cells: 0

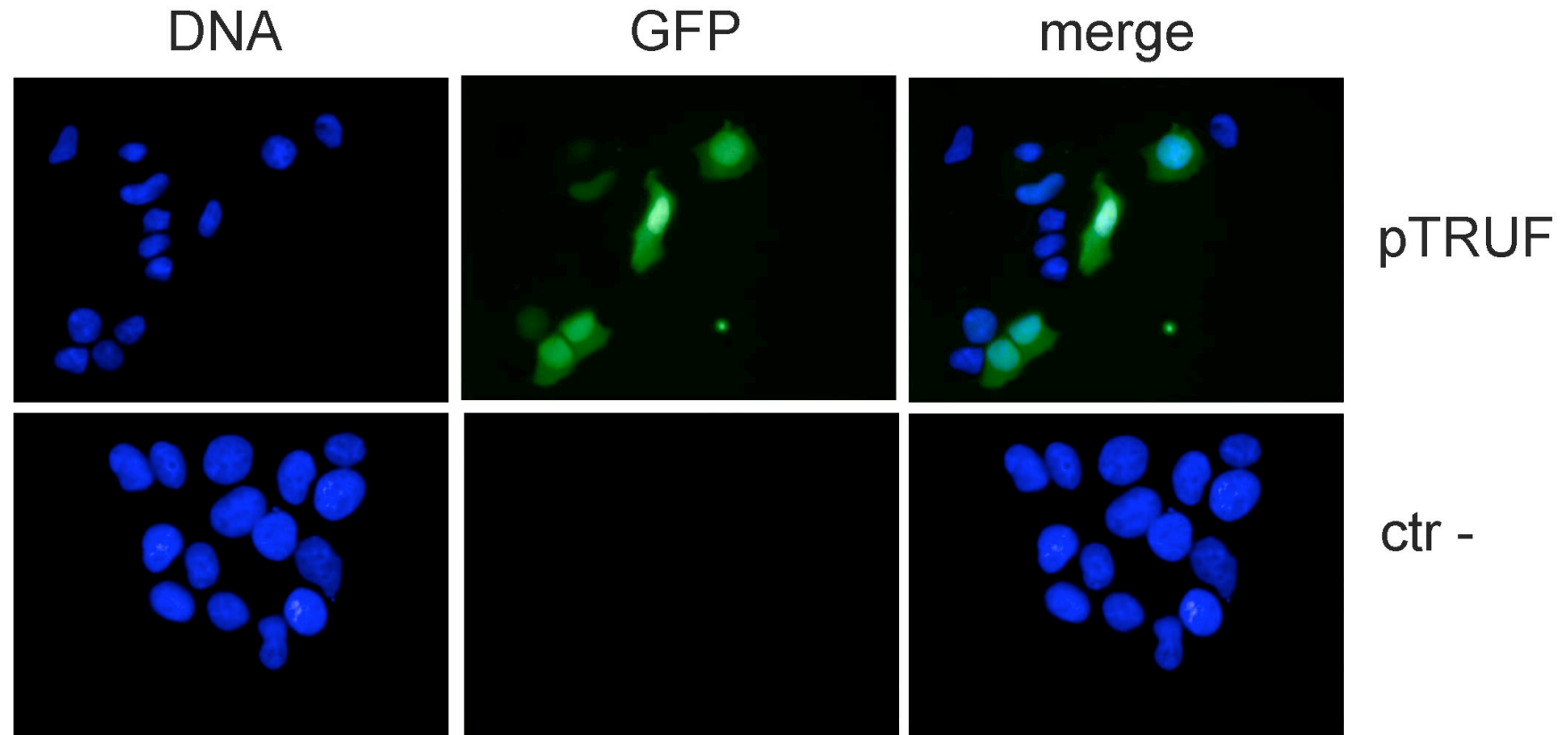
pTRUF:

Cells counted: 110

% GFP positive cells: 43

Transfection efficiency:  $43/110=39\%$

# Gruppo f



Ctr-:

Cells counted: 100

% GFP positive cells: 0

pTRUF:

Cells counted: 106

% GFP positive cells: 36

Transfection efficiency:  $36/106=33,9\%$